

Year 6 Residential 2018



Where is the residential?

- Youlbury Scout Adventure Centre.
- Set in 42 acres of woodland in rural Oxfordshire, Youlbury Scout Activity Centre is the perfect location for any outdoor adventure.
- <http://www.scoutactivitycentres.org.uk/locations/youlbury/>



When is the residential?

- Monday 25th June to Friday 29th June

Where is the residential?



Activities



A c t i v i t i e s

Session	Time	1	2	3
Monday 06 Feb				
Mon	13:30 - 15:00	Abseiling (JL side)	Orienteering	Archery (Outdoor)
Mon	15:15 - 16:45	Orienteering	Abseiling (JL side)	Team Building 1
Mon	19:00 - 20:30	Wide Games	Wide Games	Wide Games
Tuesday 07 Feb				
Tue	09:15 - 10:45	Archery (Outdoor)	Team Building 1	Abseiling (JL side)
Tue	11:00 - 12:30	Team Building 1	Archery (Outdoor)	Orienteering
Tue	13:30 - 15:00	3G Swing	High All Aboard 1	Incline Climbing
Tue	15:15 - 16:45	High All Aboard 1	3G Swing	Crate Stacking (Linear)
Tue	19:00 - 20:30	Wide Games	Wide Games	Wide Games
Wednesday 08 Feb				
Wed	09:15 - 10:45	Incline Climbing	Crate Stacking (Linear)	3G Swing
Wed	11:00 - 12:30	Crate Stacking (Linear)	Incline Climbing	High All Aboard 1
Wed	13:30 - 15:00	Shelter Building	Backwoods Cooking	Sensory Trail
Wed	15:15 - 16:45	Backwoods Cooking	Shelter Building	Pioneering
Wed	19:00 - 20:30	Wide Games	Wide Games	Wide Games
Thursday 09 Feb				
Thu	09:15 - 10:45	Sensory Trail	Pioneering	Jacobs Ladder (Tower)
Thu	11:00 - 12:30	Pioneering	Sensory Trail	Leap of Faith 2
Thu	13:30 - 15:00	Zip Wire	Aerial Trek	Shelter Building
Thu	15:15 - 16:45	Aerial Trek	Zip Wire	Backwoods Cooking 2
Thu	19:00 - 20:30	Campfire Circle	Campfire Circle	Campfire Circle
Friday 10 Feb				
Fri	09:15 - 10:45	Jacobs Ladder (Tower)	Leap of Faith 2	Zip Wire
Fri	11:00 - 12:30	Leap of Faith 2	Jacobs Ladder (Tower)	Aerial Trek

Medication

- Please update us on medical needs; Hay fever, nut allergy.
- Ensure medication is up to date; Asthma pumps, Epi-pens
- If your child suffers from travel sickness, please provide them with appropriate medicine.

Food

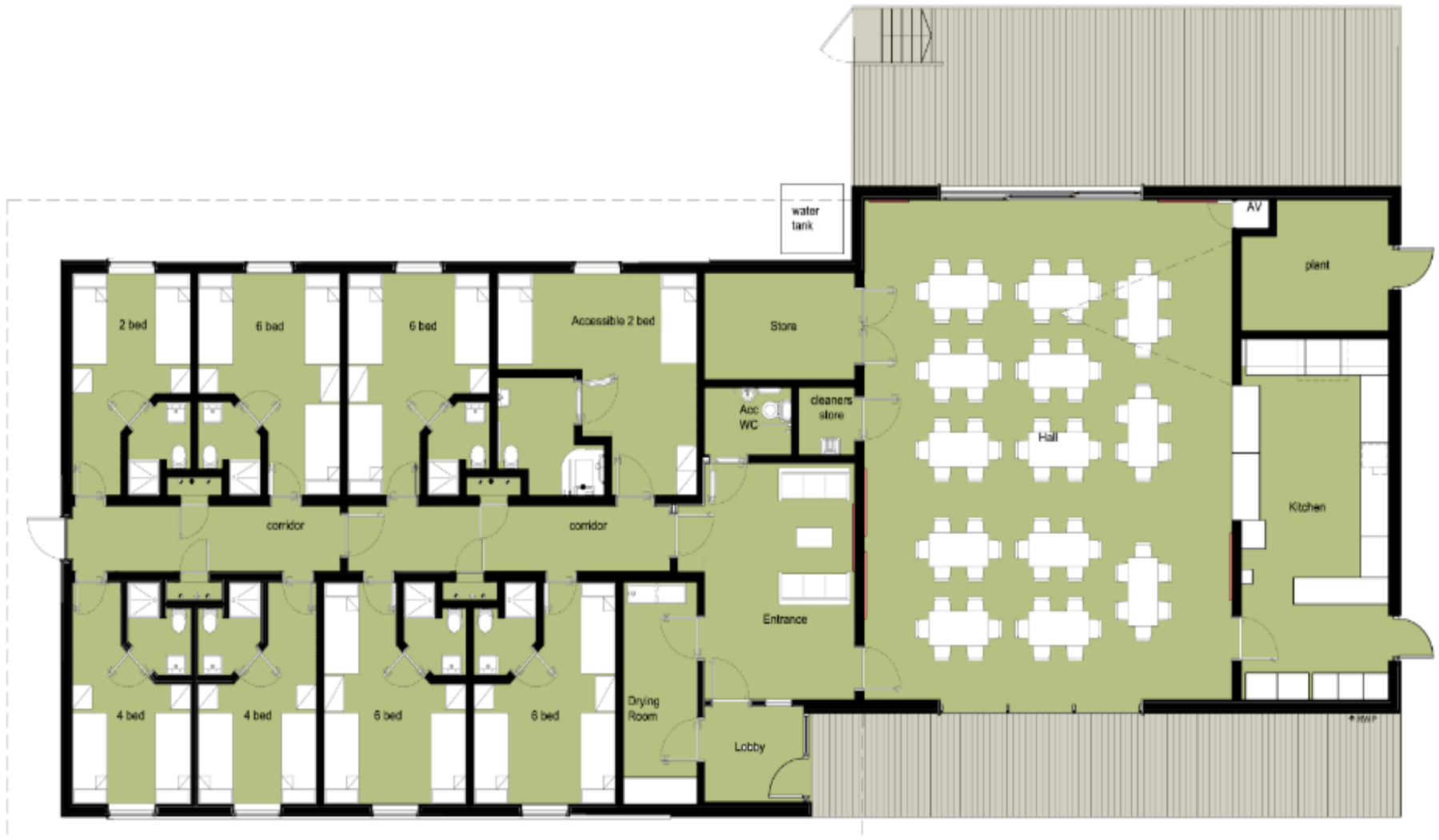
- Please provide your child with a **hearty breakfast** on Monday morning.
- Packed lunches will be provided by the school for the first day.
- **No additional food allowed please.**

Travel times

- Drop off at school 7.30am on 25.06.18. Leaving at 7.45am.
- Returning to school 3:30pm on 29.06.18



Cabins



K i t



Kit List

General

- Torch (and spare batteries)
- Any medication required - e.g. asthma inhaler, hayfever tablets, Epi Pen
- *Your teachers will need a note from your parents if you need to take any medication; they will keep your medication for you.*
- Sleeping bag OR sheets/duvet, pillow and nightwear
- Towel and toiletries
- Underwear and suitable clothing for activities (detailed below)
- Plastic bag for dirty or wet clothes
- Clothing for cold and warm weather
- Something to tie your hair back if it's long

Land based activities

- Trousers: 1 pair per 2 days + 1 if staying more than 2 nights (jeans not recommended)
- T-shirts/base layers: 1 per 2 days + 1 if staying more than 2 nights (both long and short sleeves, not vest tops)
- Sweatshirts/hoodies/fleeces - 1 per 2 days + 1 if staying more than 2 nights
- Closed toe sturdy footwear, e.g. trainers or walking boots x 2 or more pairs (flip flops, sandals or Crocs are not suitable. Wellies are not suitable for water and climbing activities)
- Waterproof jacket and trousers x 1

Water based activities

- Set of clothes that you don't mind getting very wet (preferably with long sleeves)
- Extra fleece layer (it can get very cold on the water, especially when wet)
- Closed toe footwear for in the water (open toe shoes such as flip flops or sandals are not suitable)
- Full change of clothing, including underwear, socks and shoes
- Towel and toiletries for showers
- Waterproof top and bottoms (clothes that can go in the water; can also bring swimming costume as a layer)
- String, cord or similar to secure your glasses if you need to wear them whilst on the water

PLEASE NOTE: We will supply all safety equipment such as helmets and buoyancy aids. Where wetsuits are not required we do not supply these. However, if you have your own you are welcome to use it.



Technology not allowed!

Don't

- *Wear jeans or cotton where it can be avoided
- * Bring any items of value/electronics
- *Wear jewellery
- *Forget your waterproofs



Contact

- This is in case of emergency only. Please contact the office at Sebright School and we will reach our staff.
- As you will not be able to contact your child on a daily basis, the website will be updated daily. This will allow you to follow along with what the Year 6's are doing!

Q&A

Full payment due Mon 11th June

Expectations for behaviour

School debt